



San Joaquin County Respiratory Illness (Influenza) Report

September 30, 2018 (Week 40) — April 27, 2019 (Week 17)

OVERVIEW

- Flu activity is rapidly decreasing with minimal positive results (Figures 1 & 2); this is similar to statewide and national trends.
- Thirteen confirmed deaths (all ages) this flu season compared to thirty-one during the same time period last flu season (Table 1).
- In Week 17, the majority of influenza positive specimens were A/H3N2 instead of A/H1N1, a pattern that started in week 9 (Figure 2).

Table 1. Deaths and Outbreaks, San Joaquin County

Indicators	Current Season	Previous Season
	(Week 40-Week 17)	(Week 40-Week 17)
Deaths due to influenza (total) *	13	31
<18 years ¹	1	1
18-64 years	8	7
65+ years	4	23
Respiratory outbreaks	2	13

*NOTE: New changes in Title 17 reporting: influenza deaths (ages 18-64 years) are no longer reportable as of this season; *All deaths are obtained from death certificates by date of death; therefore a significant delay in counting and will be updated in future reports; ¹pediatric deaths are still reportable.*

Figure 1. Influenza Positive Tests

San Joaquin County Sentinel Clinical Laboratories

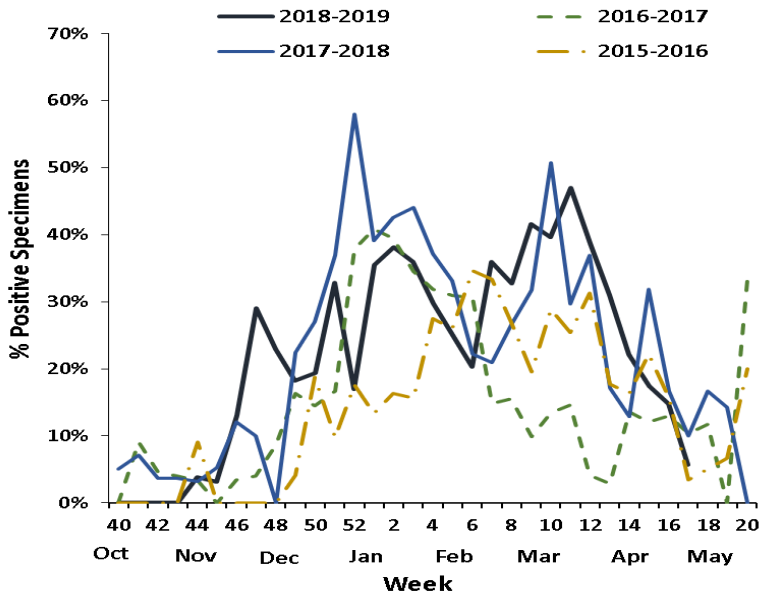
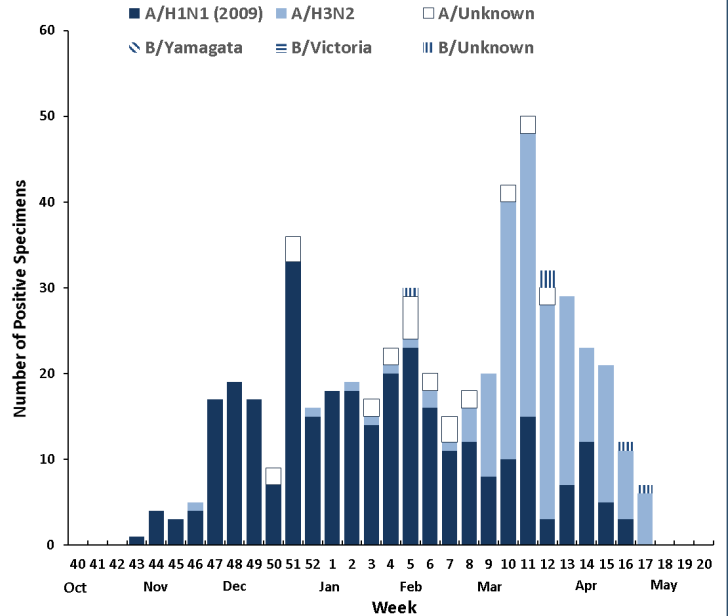


Figure 2. Influenza Positive Tests by Type and Subtype²

San Joaquin County Public Health Laboratory



For information on influenza in California:

<https://www.cdph.ca.gov/Programs/CID/DCDC/Pages/Immunization/Influenza.aspx>

For information on influenza in the United States:

<http://www.cdc.gov/flu/index.htm>

Notes: Because data are preliminary, the information may be updated in later reports as additional data are received. ²The percent of specimens testing positive for influenza is not reported because public health laboratories often receive samples that have already tested positive for influenza at a clinical laboratory and therefore percent positive would not be a valid indicator of influenza activity.

Sources: Table 1. Outbreaks accessed through local CalREDIE system and deaths obtained from the California Department of Public Health (CDPH) Influenza Surveillance program, 5/1/2019. Figure 1. Influenza positive tests were obtained from the CDPH Influenza Surveillance program, 5/1/2019. Figure 2. Influenza type and subtype data received from San Joaquin County Public Health Laboratory (SJCPLH), 4/29/2019.

Produced by: San Joaquin County Public Health Services, Epidemiology, rev 5/2/2019.